

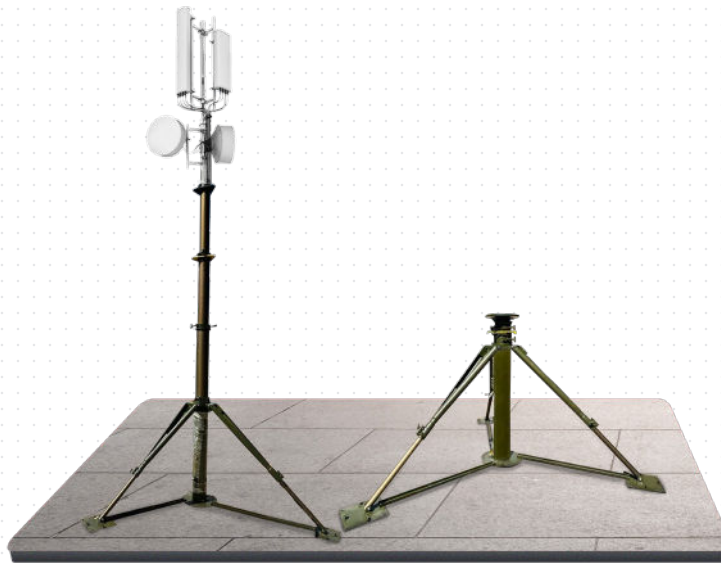
ELECTRO-OPTIC



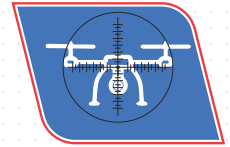
RADIO COMMUNICATION



RADAR



SIGINT



C-UAS



TELECOM 4G / 5G CELLULAR

PEL's **Piyush Series** Building Rooftop Masts are a unique solution to deploy complex electronics such as base station RF front end and antenna of DMR/ TETRA/ LoRA/ LTE/ 5G cellular, Anti-Drone and other such systems required to provide communications in dense urban settings or secure critical infrastructure. These masts can be elevated by Air compressor and support medium and heavy payloads. Such masts are capable of supporting up to 10m height and up to 250kg payload. Their key advantage is that they can be lowered for any maintenance or repair of the payload and are much lighter and safer than equivalent fixed rooftop Towers and Masts.

OUR USP's



Designed for MIL STDs



Technician Friendly and Safe



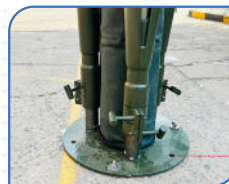
Possibility for Light Weight Solution



High Stability and Rigidity for Mission Critical Applications

Sailent Features

- Lightweight Construction – Tubes in High Strength Aluminum Alloy or Composite
- Telescopic Mast Sections Extended by Compressor
- Full Length Key-Ways ensure Anti-Rotation
- Heights up to 10 metres
- Top Loads up to 250kg
- Specialized Tripod Design for Installation on Building Rooftops
- Provides Very Safe Approach of Lowering Payload for Maintenance Purposes
- Can be Fixed on Concrete Plinth
- Provision of Putting Dead Weight (Sand Bag) on its Base for Temporary Deployment



Hole for Concrete Anchor Bolts



Foot



Base Plate

2+ Types of Building Rooftop Tripod Mast Developed

20+ Years of Experience

100+ Production Capacity per Month

AS 9100D:2016 Quality Certified
ISO 9001:2015 Manufacturing



TECHNICAL SPECIFICATIONS

BUILDING ROOFTOP TRIPOD MASTS

Model No.	Height (m)		Head Load (Kg)	Wind Area (m ²)	Wind Speed (Operational/ Survival) (kmph)	Sway	Weight of Mast (Kg)	No. of Sections	Tube Dia (mm)	No. of Guy Ropes
	Retracted	Erected								
PP250P-5-1.2M-01	1.6	5	250	1	80/ 120	< 1°	46	5	130 - 183	3 x 4
PP150P-10-2.2M-01	2.2	10	150	1	80/ 120	< 1°	90	7	130 - 214	3 x 4

Note:

- a. Mast can be customized for wind load > 80 Km/Hr
- b. Accessories weight is applicable as per the height of the mast
- c. Mast sway < 1° can be provided against request

STANDARD ACCESSORIES & TOOL KIT



Pegs & Hammer | Base Plate & Nails | SS & Kevlar Guy ropes | Foot Pump | Tool kit



PAYLOAD ADAPTER (OPTIONAL)



Heavy Duty Payload

SPECIAL ACCESSORIES (OPTIONAL)



Air Compressor



Sand Kit



Multi Function Active Junction Box



Rotator (100kg)

ANCILLARY



Guy Rope Controller



Lightning Arrester & Earthing Kit : Pipe & Cable

CARRYING CASES: SOFT/HARD



Roto Mould/ FRP



Plastic Injection Moulding

