

PEL's **Kailash Series** of Detachable Section Masts are an ideal solution to cater Tactical Elevation requirements in conditions where Man-portability is also desired. The solution comprises a Tripod and Pipe sections of the same length and diameter which are "pushed up" from the Tripod via a hand winch mechanism. The mast is stabilized using guy ropes and a guy cable ensures that no more than 2 persons are needed for Mast deployment. This series is capable of supporting up to 18 metres height.

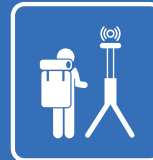
OUR USP's



Designed for MIL STDs



Man Portable



Possibility for Light Weight Solution



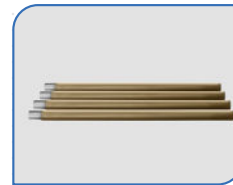
High stability and Rigidity for Mission Critical Applications

Silent Features

- Lightweight construction – tubes in high strength Aluminum Alloy or Composite
- Tripod base with sectional tubes of same height and diameter are pushed-up via hand-winch mechanism
- Built-in anti-rotation
- Heights up to 18 metres
- Top loads up to 50kg
- Hand cranked manual winch
- Guy Rope Controller ensures safe deployment and reduces man-power required
- Integrated spirit level on Tripod to enable flatness on uneven ground



Tripod



Mast Sections



Winch

3+ Types of Detachable Section Mast Developed

10+ Years of Experience

100+ Production Capacity per Month

AS 9100D:2016 Quality Certified
ISO 9001:2015 Manufacturing



TECHNICAL SPECIFICATIONS

DETACHABLE SECTION BASED HAND WINCH OPERATED TRIPOD MASTS

Model No.	Height (m)		Head Load (Kg)	Wind Area (m ²)	Wind Speed (Operational/ Survival) (kmph)	Sway (°)	Approx. Weight of Sections & Tripod (Kg)	No. of Sections	Tube Dia	No. of Guy Ropes
	Section	Erected								
PD20P-10-1.4M-21	1.4	10	20	0.25	80/120	<2°	37	7 + 1	60	3 x 3
PD40P-18-2.0M-21	2	18	40	0.5	80/120	<2°	120	13 + 1	120	3 x 4

Note: a. Specifications are subject to change without notice

STANDARD ACCESSORIES & TOOL KIT



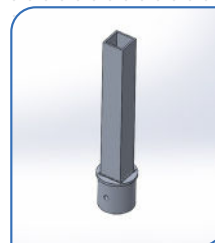
Pegs & Hammer | Base Plate & Nails | SS & Kevlar Guy ropes | Foot Pump | Tool kit



PAYLOAD ADAPTER (OPTIONAL)



Dual Payload



Adapter



Heavy Duty Payload

SPECIAL ACCESSORIES (OPTIONAL)



Guy Rope Controller



Sand Kit

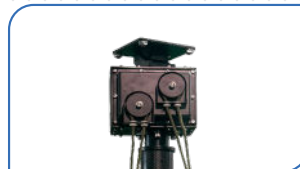


Earthing Kit : Pipe & Cable



Lightning Arrester

ANCILLARY



Manual Rotator/ Tilter (MRT)

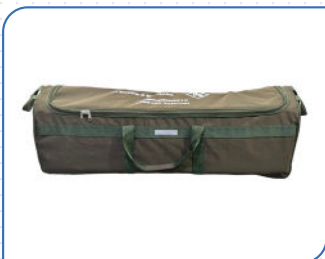


Pan-Tilt (25kg)



Multi Function Active Junction Box

CARRYING CASES: SOFT/HARD



Canvas



FRP



Roto Mould



Plastic Injection Moulding

