



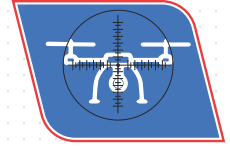
ELECTRO-OPTIC



SIGINT



RADIO COMMUNICATION



C-UAS



PEL **Balwan Series** of Heavy Duty Tripods provide very high stability for payloads such as Radars, Electro-Optic Sensors and Anti-Drone systems. High strength Aluminum alloy based design ensures reliability and economy of weight. Packed in a convenient carrying case, it's quick deployable for on-the-go missions.

## OUR USP's



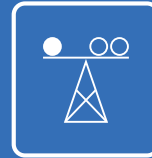
Designed for MIL STDs



Mounting Flexibility for any Ground Surface



Excellent Portability



Highly stable for Payloads



Quick Deployable

### Silent Features

- Professional tripod for Heavy duty payloads
- Easily Deployable in tough field conditions
- Hard Anodized coating
- Strong Tubular Construction with high torsional rigidity
- Max Height 1.5 metres
- Maximum Payload up to 400 Kg
- Material : High strength aluminum alloy
- Powder coated and Hard anodized parts for extreme conditions
- Footplates for hard, semi-hard and soft ground



Leveler



Stabilizer



Foot

**4+** Types of Heavy Duty Tripod developed

**10+** Years of Experience

**100+** Production Capacity per Month

**AS 9100D:2016** Quality Certified  
**ISO 9001:2015** Manufacturing



# TECHNICAL SPECIFICATIONS

## HEAVY DUTY TRIPODS

Model No.	Height (m)		Head Load (Kg)	Weight of Tripod (Kg)	Max Spread dia (mm)	Accessories weight (kg)	Folding Dimensions (mm)
	Retracted	Erected					
PT100P-1.5-1.1M	1100	1500	100	16	2000	5	360 x 1350 (L)
PT100P-1.5-1.1M	1100	1500	200	19	2100	5	360 x 1350 (L)
PT400P-1.5-1.1M	1100	1500	400	26	2100	6	480 x 1400 (L)

**Note:** a. Customized for greater heights and peculiar payloads against request

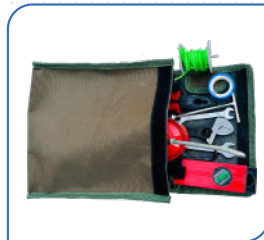
### STANDARD ACCESSORIES & TOOL KIT



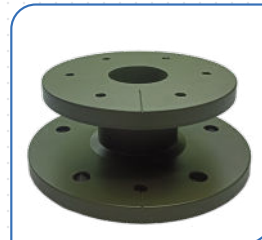
Nails



Hammer



Tools

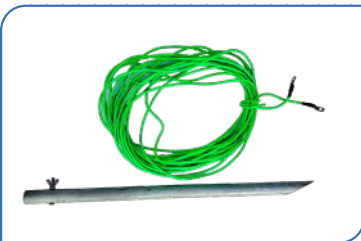


Circular Heavy Duty Bracket



Heavy Duty Payload

### SPECIAL ACCESSORIES (OPTIONAL)



Earthing Kit : Pipe & Cable

### ANCILLARY

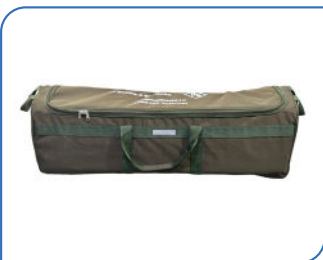


Rotator (50/ 100kg)



Multi Function Active Junction Box

### CARRYING CASES: SOFT/HARD



Canvas



FRP



Roto Mould



Plastic Injection Moulding

