



**ELECTRO-OPTIC**



**RADIO COMMUNICATION**



**ILLUMINATION**



PEL's **Anju Series** of Push up Masts are a portable mast that can be easily carried as manpack or loaded in the trunk of a small to mid-sized vehicle. It can be deployed using a light weight Tripod or as drive-on-frame system. Push up masts can be extended to a full height of 11 metres within a few minutes. It has quick lock/release collars to extend the mast manually by pushing up the sections and fixing them into position. Suitable for lightweight elevation requirements of smaller payloads such as cameras, lighting and radio antennae.

## OUR USP's



Designed for MIL STDs



Man Portable



Quick Deployment by 1 Person



Maintenance Free

### Silent Features

- Lightweight construction – tubes are made from high strength Aluminum Alloy
- Telescopic Mast sections manually "pushed up" with payload
- Quick locking mechanism to lock and release collars
- Heights up to 10 metres
- Top loads up to 10kg
- Can be stowed in trunk of small vehicle



Locking Pin



Tilting Adjustment



Locking Pin Pouch

**6+** Types of Push-up Mast Developed

**20+** Years of Experience

**200+** Production Capacity per Month

**AS 9100D:2016** Quality Certified  
**ISO 9001:2015** Manufacturing



# TECHNICAL SPECIFICATIONS

## PUSH-UP MASTS (DRIVE ON FRAME/ TRIPOD MAST)

Model No.	Height (m)		Head Load (kg)	Wind Area (m <sup>2</sup> )	Wind Speed (Operational/ Survival) (kmph)	Sway	Approx Weight of Mast (Kg)	No. of Sections	Tube Dia	No. of Guy Ropes	Weight (Kg)	
	Retracted	Erected									Frame	Tripod
PU10P-4-1.2M-30	1.2	4	10	0.1	60/80	<1°	8	5	50.8 - 76.2	-	10	5
PU8P-6-1.4M-30	1.4	6	8	0.1	60/80	<2°	10	6	44.45 - 76.2	-	11	6
PU5P-6-1.4M-30	1.6	6	5	0.1	60/80	<2°	12	6	44.45 - 76.2	3 x 1	12	7
PU5P-8-1.8M-01	1.8	8	5	0.1	80/100	<2°	13	8	31.8 - 76.2	3 x 2	-	8
PU5P-11-1.9M-01	1.9	11	5	0.1	80/100	<2°	14	8	31.8 - 76.2	3 x 2	-	9

- Note:**
- a. Built-to-Specifications available
  - b. Comes in two configurations - either Drive-on-Frame or Tripod
  - c. Guy ropes optional and typically needed for >6m erected height

### STANDARD ACCESSORIES & TOOL KIT



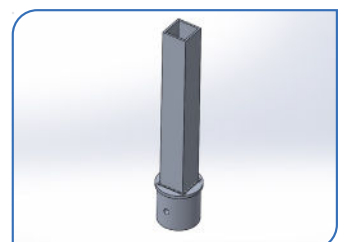
Pegs & Hammer | Base Plate & Nails | SS & Kevlar Guy ropes | Foot Pump | Tool kit



### PAYLOAD ADAPTER (OPTIONAL)



Dual Payload



Adapter

### SPECIAL ACCESSORIES (OPTIONAL)



Earthing Kit : Pipe & Cable



Lightning Arrester

### ANCILLARY

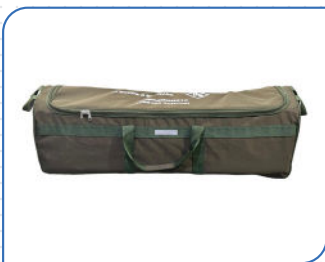


Pan-Tilt (5kg)



Rotator (5kg)

### CARRYING CASES: SOFT/HARD



Canvas



FRP



Roto Mould



Plastic Injection Moulding

