

**ELECTRO-OPTIC**



**RADIO COMMUNICATION**



**ILLUMINATION**



PEL's **Partha Series** of Vehicular Roof Top Masts are specially designed for mid-sized and larger vehicles to support payloads such as Electro-Optics, Radio antennae, Illumination systems, and others. It easily mounts as a roof top carrier and does not require the end-user to make vehicle modifications for its use.

## OUR USP's



Designed for MIL STDs



Suitable for On-the-Quick-Halt Vehicular Operations



Remote Operation from Cabin



Quick Deployable

### Silent Features

- Compact, roof-mount system on vehicle carrier
- Integrated air compressor and Li-Ion battery for mast lift/ retraction and power supply
- Built-in anti-rotation
- Wide range of payload capacity and height options from 3 metres to 5 metres above Roof Top
- Top loads up to 50kg
- Handheld Pendant for remote operation of mast and payload Pan / Tilt



Pneumatic Mast Section



Roof Top Mast System



Roof Mount Design

**2+** Types of Vehicular Roof Top Mast Developed

**15+** Years of Experience

**20+** Production capacity per Month

**AS 9100D:2016** Quality Certified  
**ISO 9001:2015** Manufacturing



# TECHNICAL SPECIFICATIONS

## VEHICLE ROOF TOP MASTS

Model No.	Height (m)		Head Load (Kg)	Wind Area (m <sup>2</sup> )	Wind Speed (Operational/ Survival) (kmph)	Sway	Weight of Mast (Kg)	No. of Sections	Tube Dia (mm)	Power Backup*	Power*	Dimensions (mm)	Mounting Frame Base (mm)
	Retracted	Erected											
PRT30P-3-1.2M	1.2	3	30	0.2	80/ 120	< 2	55	4	70-100	5- 6 Hrs	12 /24 V 120W	1200 (L) x 700 (W) x 400 (H)	700 (W) x 1200 (L)
PRT50P-3-1.2M	1.2	3	50	0.3	80/ 120	< 2	65	4	90-120	4-5 Hrs	12 /24 V 150W	1400 (L) x 800 (W) x 400 (H)	800 (W) x 1400 (L)

Note:

- a. Mast can be customized for higher Wind load > 80 Km/Hr
- b. Accessories weight is applicable as per the height of the mast.

### STANDARD ACCESSORIES & TOOL KIT



Pegs & Hammer | SS & Kevlar Guy ropes

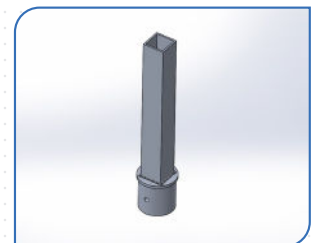


Tools

### PAYLOAD ADAPTER (OPTIONAL)



Dual Payload



Adapter

### SPECIAL ACCESSORIES (OPTIONAL)



Lightning Arrester & Earthing Kit : Pipe & Cable

PNEUMATIC CONTROL BOX

LI-ION BATTERY

AIR COMPRESSOR

MAST

LINEAR ACTUATOR

