

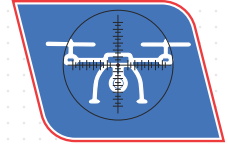
**ELECTRO-OPTIC**



**SIGINT**



**RADIO COMMUNICATION**



**C-UAS**



PEL's **Yogesh Series** of Winch Masts cater to the requirements of Tactical Elevation for applications such as Radio Antenna, Electro-Optic, Anti- Drone and Illumination. These masts can be raised using either a hand crank or a winch power drive, and they are capable of supporting light, medium, and heavy payloads up to 21 metres. Additionally, they can be conveniently mounted on vehicular shelters, trailers and ground.

## OUR USP's



Designed for MIL STDs



Quick Deployment by 2 person



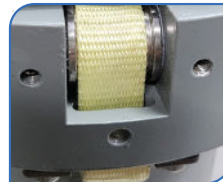
Capable of extreme temperature operations



High stability and rigidity for Mission Critical Applications

### Sailent Features

- Lightweight construction – tubes in high strength Aluminum Alloy or Composite
- Telescopic mast sections extended simultaneously by high performance belts
- Full length key-ways ensure anti-rotation
- Heights up to 18 metres
- Top loads up to 100kg
- Hand cranked manual or electrically driven winch
- Several hundred in-service Masts with Security customers



Pully Drive



Winch



Electric Winch

**5+** Types of Winch Masts Developed

**15+** Years of Experience

**100+** Production Capacity per Month

**AS 9100D:2016** Quality Certified  
**ISO 9001:2015** Manufacturing



# TECHNICAL SPECIFICATIONS

## WINCH MASTS (GROUND / VEHICLE MOUNT)

### HAND WINCH MASTS

Model No.	Height (m)		Head Load (Kg)	Wind Area (m <sup>2</sup> )	Wind Speed (Operational/ Survival) (kmph)	Sway (°)	Weight of Mast (Kg)	No. of Sections	Tube Dia	No. of Guy Ropes	Winch Weight (Kg)
	Retracted	Erected									
PW100P-9-3M-01	3	9	100	1	80/ 120	< 1	50	4	100 - 214	3 x 3	8
PW70P-10-2.5M-01	2.5	10	70	0.75	80/ 120	< 1	65	6	100 - 155	3 x 4	8
PW50P-15-2.8M-01	3	15	50	0.5	80/ 120	< 1	84	7	90 - 155	3 x 5	8
PW50P-18-3M-01	3	18	50	0.7	80/ 120	< 1	132	9	100 - 198	3 x 3	8
PW40P-2-1.5M-20	1.5	2	40	0.7	80/ 120	< 1	15	2	70 - 80	-	8
PW65P-5-2M-20	2	5	65	0.8	80/ 120	< 1	66	4	120 - 155	-	8

### ELECTRIC WINCH MASTS

Model No.	Height (m)		Head Load (Kg)	Wind Area (m <sup>2</sup> )	Wind Speed (Operational/ Survival) (kmph)	Sway (°)	Weight of Mast (Kg)	No. of Sections	Tube Dia	No. of Guy Ropes	EM Unit Weight(Kg)
	Retracted	Erected									
PE70P-10-2.5M-01	2.5	10	70	0.75	80/ 120	< 1	65	6	100 - 155	3 x 3	25
PE50P-15-2.8M-01	3	15	50	0.5	80/ 120	< 1	84	7	90 - 155	3 x 4	25
PE50P-18-3M-01	3	18	50	0.7	80/ 120	< 1	132	9	100 - 198	3 x 5	25
PE50P-21-3M-01	3	21	50	0.6	80/ 120	< 1	165	10	100 - 214	3 x 5	25

Note:

- a. External winch Power Drive is available as an option
- b. Mast can be customized for wind load > 80 Km/Hr

### STANDARD ACCESSORIES & TOOL KIT



Pegs & Hammer | Base Plate & Nails | SS & Kevlar Guy ropes | Foot Pump | Tool kit



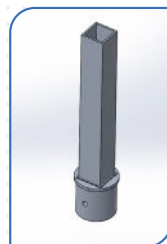
### PAYLOAD ADAPTER (OPTIONAL)



Dual Payload



Side Mounting Payload

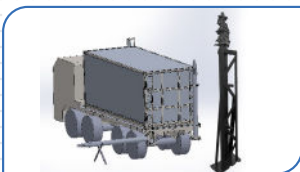


Adapter



Heavy Duty Payload

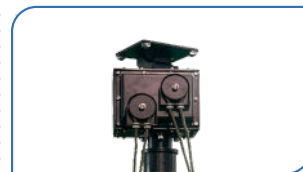
### SPECIAL ACCESSORIES (OPTIONAL)



Vehicle Mounting Brackets



Sand Kit



Manual Rotator/ Tilter (MRT)



Pan-Tilt (25/ 50kg)



Earthing Kit : Pipe & Cable



Lightning Arrester



Rotator (50/ 100kg)

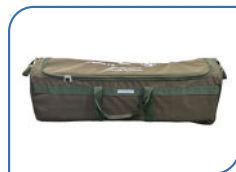


Multi Function Active Junction Box



Hand Held Pendant

### CARRYING CASES: SOFT/HARD



Canvas



FRP



Roto Mould



Plastic Injection Moulding

**PRECISION ELECTRONICS LIMITED**

"we always know who we're working for"

contacts@pel-india.in

+91-120-2551556 / 7 | Fax: +91-120-2524337

Released On. PEL 21052024-D

Follow us on -

