



PEL's **Piyush Series** of Pneumatic Masts address the needs of Tactical Elevation for Radio Antenna, Electro-Optic, Anti-Drone and Illumination. These masts can be elevated by a Foot pump or Air compressor and support light, medium and heavy payloads. This series is capable of supporting up to 25 metres height and are easily mountable on vehicular shelters, trailers and ground.

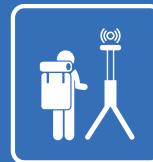
OUR USP's



Designed for MIL STDs



Quick Deployment by 2 Person



Possibility for Light Weight solution



High stability and Rigidity for Mission Critical Applications

Sailent Features

- Lightweight construction – tubes in high strength Aluminum Alloy or Composite
- Telescopic mast sections extended by hand-pump, foot-pump OR compressor
- Full length key-ways ensure anti-rotation
- Heights up to 25 metres
- Top loads up to 250kg
- Several thousand in-service Masts with Security customers



Air Nozzle



Locking Mechanism



Base plate with Tilting Cup

25+ Types of Pneumatic Mast Developed

20+ Years of Experience

200+ Production Capacity per Month

AS 9100D:2016 Quality Certified
ISO 9001:2015 Manufacturing



TECHNICAL SPECIFICATIONS

LIGHT DUTY PTM MASTS (GROUND / VEHICLE MOUNT)

Model No.	Height (m)		Head Load (Kg)	Wind Area (m ²)	Wind Speed (Operational/ Survival) (kmph)	Sway (°)	Weight of Mast (Kg)	No. of Sections	Tube Dia	Ground Mount		Tripod Mount	
	Retracted	Erected								No. of Guy Ropes	Tripod Weight (kg)		
PP15P-5-1.7M-01	1.7	6	15	0.25	80/ 120	< 2	22	6	50 - 100	3 x 2	3 x 1	14	
PP15P-9-2.5M-01	2.5	9	15	0.25	80/ 120	< 2	30	5	60 - 100	3 x 3	3 x 2	16	
PP10P-12-2.8M-01	2.8	12	10	0.2	80/ 120	< 2	37	6	50 - 100	3 x 3	3 x 2	18	
PP15P-15-3.3M-01	3.3	15	15	0.25	80/ 120	< 2	47	6	60 - 110	3 x 4	3 x 3	20	

Model No.	Height (m)		Head Load (Kg)	Wind Area (m ²)	Wind Speed (Operational/ Survival) (kmph)	Sway (°)	Weight of Mast (Kg)	No. of Sections	Tube Dia	No. of Guy Ropes
	Retracted	Erected								

MEDIUM DUTY PTM MASTS (GROUND / VEHICLE MOUNT)

PP40P-12-2.8M-01	2.8	12	40	0.5	80/ 120	< 2	49	6	80 - 130	3 x 3
PP30P-15-3.3M-01	3.3	15	30	0.4	80/ 120	< 2	53	6	70 - 120	3 x 4
PP50P-18-3.6M-01	3.6	18	50	0.5	80/ 120	< 2	82	7	90 - 155	3 x 4

HEAVY DUTY PTM MASTS (GROUND / VEHICLE MOUNT)

PP250P-5-1.2M-01	1.6	5	250	1	80/ 120	< 1	46	5	130 - 183	3 x 4
PP150P-10-2.2M-01	2.2	10	150	1	80/ 120	< 1	90	7	130 - 214	3 x 4
PP15P-22-3.7M-01	4	25	20	0.2	80/ 120	< 2	103	10	60 - 155	4 x 5

Note:

- a. Mast can be customized for wind load > 80 Km/Hr
- b. Accessories weight is applicable as per the height of the mast
- c. Mast sway < 1° can be provided against request

STANDARD ACCESSORIES & TOOL KIT



Pegs & Hammer | Base Plate & Nails | SS & Kevlar Guy ropes | Foot Pump | Tool kit



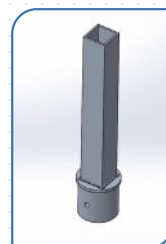
PAYLOAD ADAPTER (OPTIONAL)



Dual Payload



Side Mounting Payload

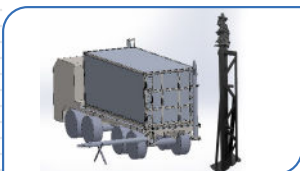


Adapter



Heavy Duty Payload

SPECIAL ACCESSORIES (OPTIONAL)

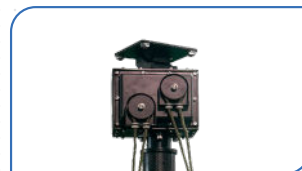


Vehicle Mounting Brackets



Sand Kit

ANCILLARY



Manual Rotator/ Tilter (MRT)



Pan-Tilt (25/ 50kg)



Air Compressor



Pneumatic Controller Unit



Rotator (50/ 100kg)



Multi Function Active Junction Box



Guy Rope Controller



Lightning Arrestor & Earthing Kit : Pipe & Cable

CARRYING CASES: SOFT/HARD



Canvas



Roto Mould/ FRP



Plastic Injection Moulding

